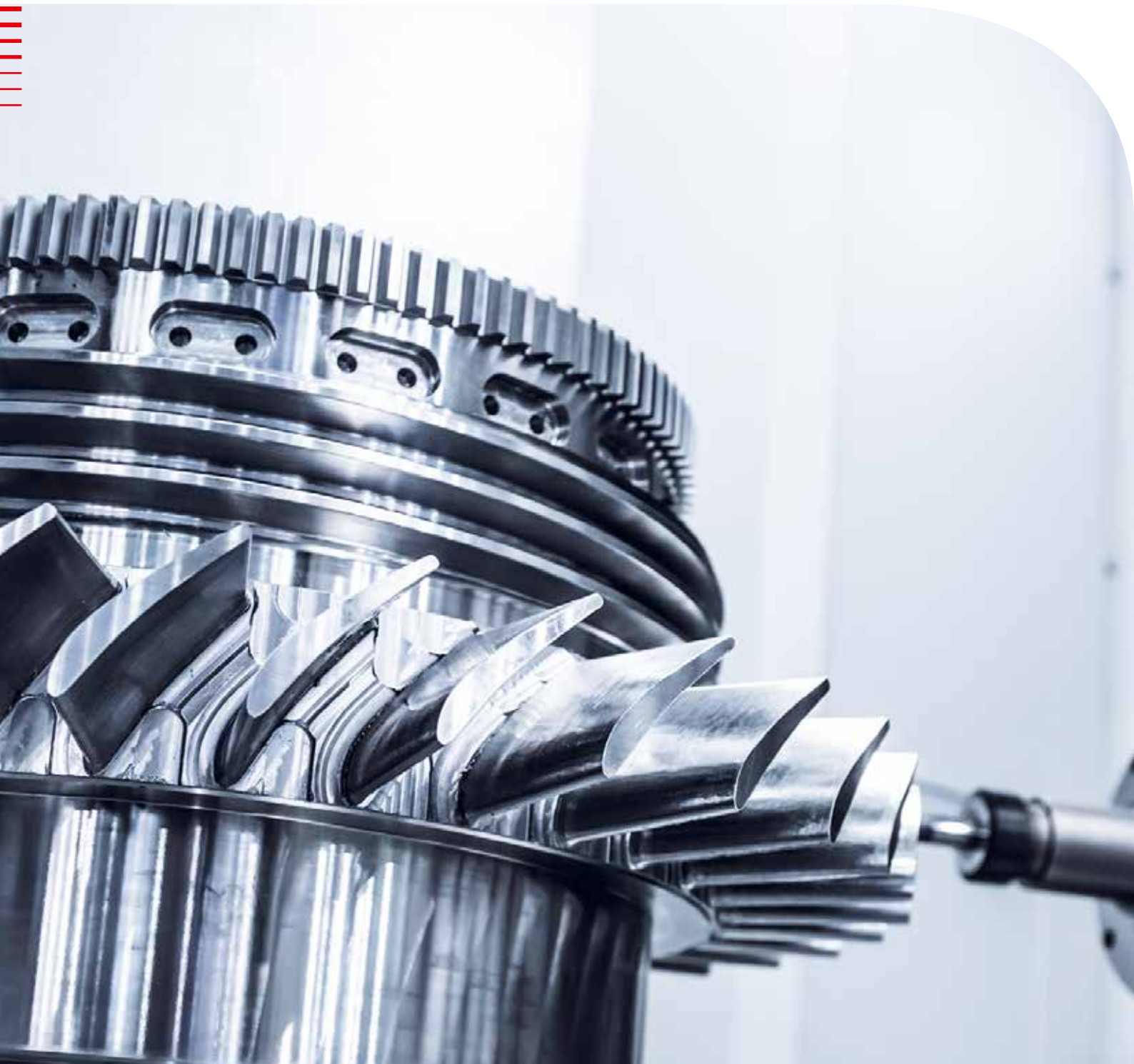




# MTS 3.0

Maximum safety  
thanks to advanced chuck monitoring

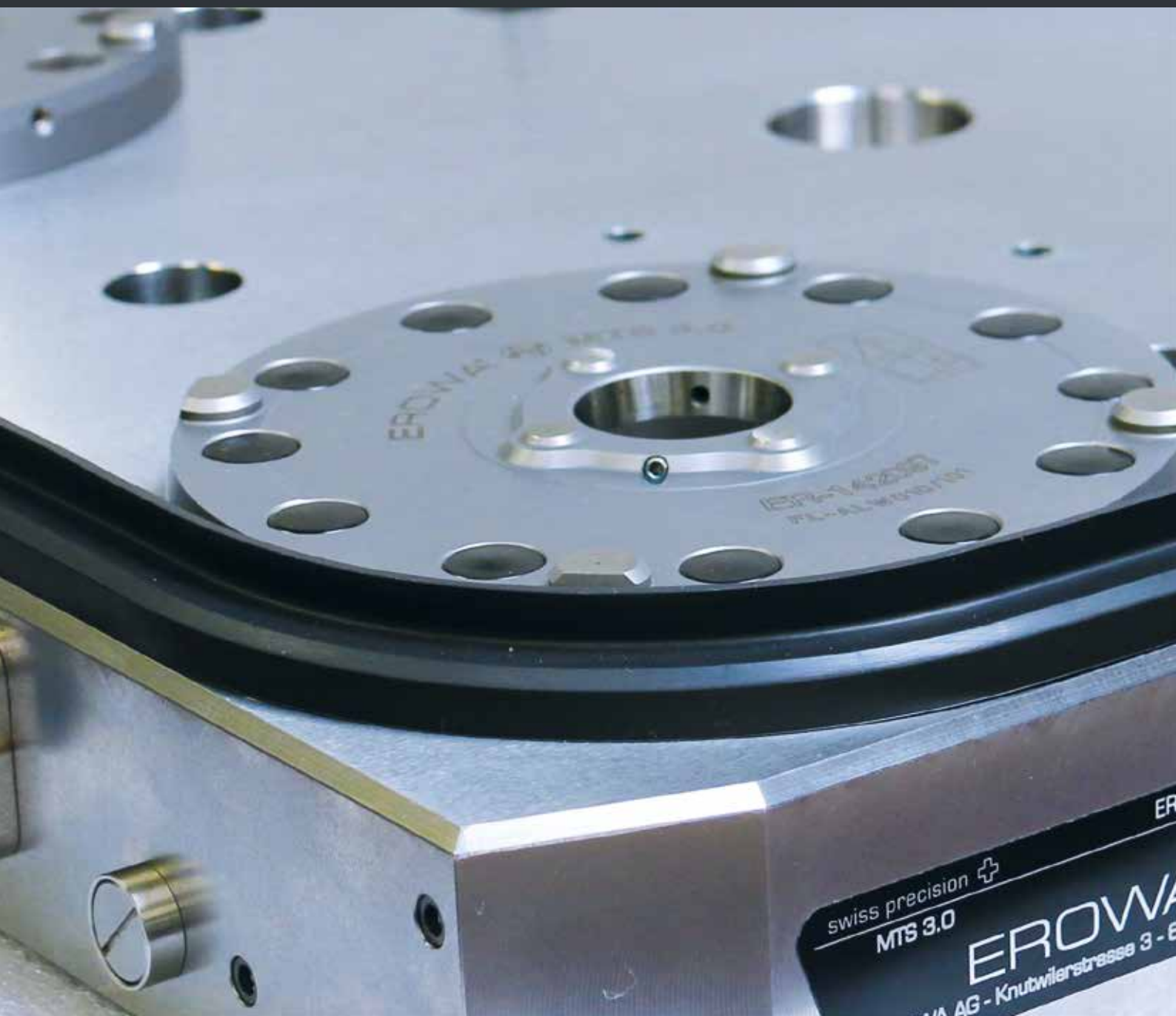


# MTS 3.0

Metalworking machines are becoming more and more powerful. Due to higher rotational and travel speeds, the clamping systems are subjected to much higher loads and the safety requirements are increasing.

The MTS 3.0 zero point clamping system takes this into account. The unique combination of pneumatic locking and spigot-presence-control decisively increases safety at the workplace.

Keyword: ISO standard 13849.



# MTS 3.0 - Dynamic processing with the utmost certainty

## Safety first

MTS 3.0 meets the highest safety standards. Thanks to the integrated monitoring functions, the machine quickly and clearly detects whether the clamping system is ready for machining. Due to the self-locking mechanism, the chucks remain 100 % securely clamped even in the event of a pressure loss.



## Powerful performance with pneumatics

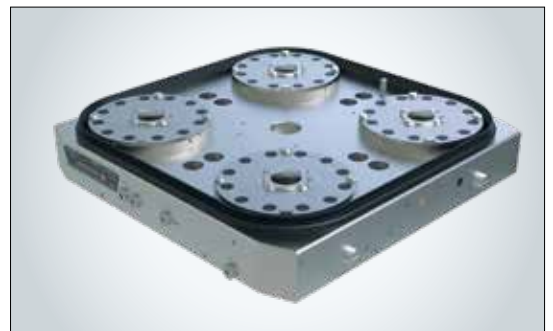
The MTS 3.0 base plate is connected to the machine purely pneumatically.

With 80 kN clamping force & the reinforced MTS 3.0 clamping spigots, the system guarantees the top performance on your machining center.



## Trust in patented technology

The technical implementation of MTS 3.0 is unique, patented and certified. The clamping system fulfils the specifications of ISO standard 13849 PLd-Cat 3.



### DECISIVE ADVANTAGES

- Uncompromising monitoring
- Safe even in case of pressure loss
- Purely pneumatic control
- 80 kN clamping force for top performance
- Complies with ISO 13849 PLd Cat 3



# MTS 3.0 - Everything under control

## Lock control

The four chucks are serially linked via pneumatic lines (P4, P8). Only when all chucks are correctly locked, the pneumatic pressure can be transmitted to the pressure sensor of the machine.

## Chucking spigot presence

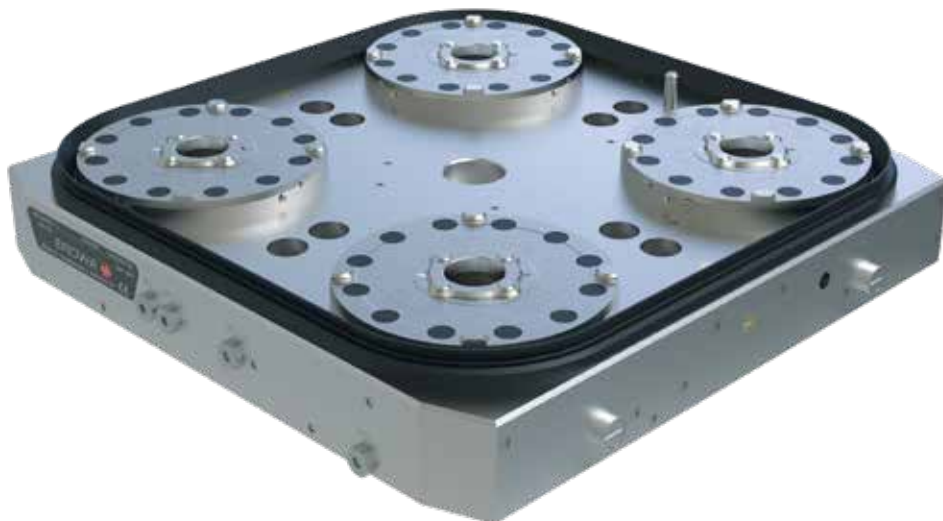
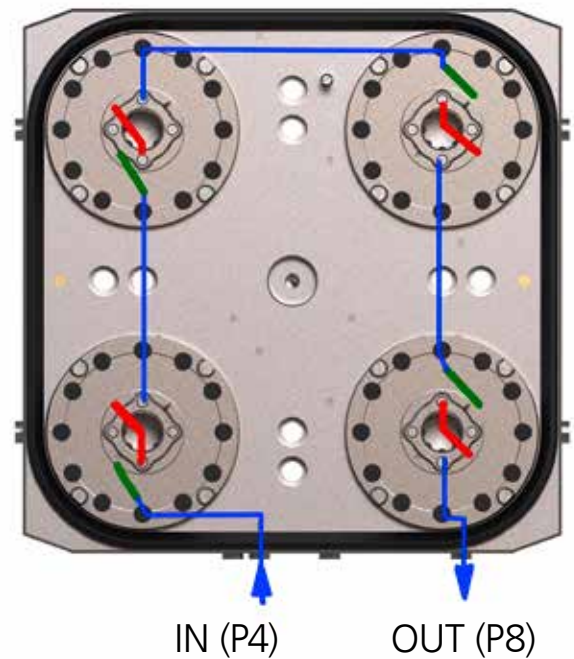
The same air circuit is used to check the presence of the clamping spigots. Only when a pallet with four correct clamping spigots is inserted the sensor can determine the required pressure.

## Combination makes the difference

If the combined locking & chucking spigot presence check is fulfilled, authorisation for machining is given. This means: All chucks are correctly clamped, all clamping spigots are present.

## Option „Open-Check“

In customised design also available with chuck open control.



# EROWA MTS 3.0

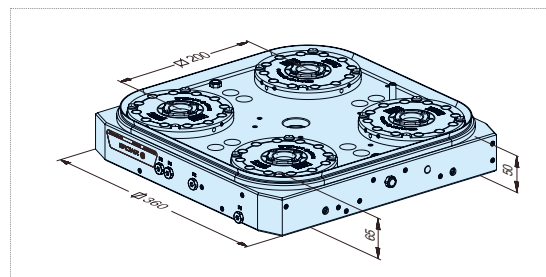
## Base plates

### ER-143858 MTS 3.0 base plate 360 x 360 P/A universal, pitch 200

INOX ☒ auto ☐ ☐ ☐



- Version** Base plate universal, steel unhardened, pitch 200mm. Including adapter flange with air boreholes.
- Connections** 4 pneumatic connections, laterally and from underneath on PC\*  $\varnothing 57\text{mm}$ : : for opening, reclamping, open check and for cleaning/presence check.
- Option** Customized adapter flange available on request.
- Application** To accommodate multiple pallets. For direct assembly on machine tables.
- To fit** Mounting hole pattern for grid 50mm/M12 and for machine tables with T-slot distances of 63 and 100mm.

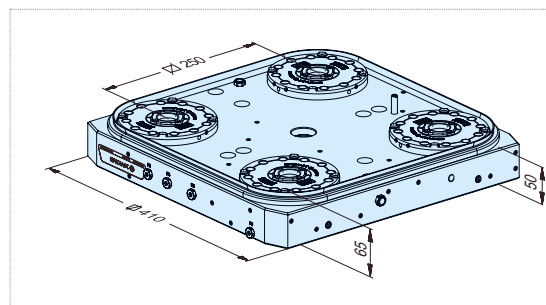


### ER-143859 MTS 3.0 base plate 410 x 410 universal, Pitch 250

INOX ☒ auto ☐ ☐ ☐



- Version** Base plate universal, steel unhardened, pitch 250mm. Including adapter flange with air boreholes.
- Connections** 4 pneumatic connections, laterally and from underneath on PC\*  $\varnothing 57\text{mm}$ : : for opening, reclamping, open check and for cleaning/presence check.
- Option** Customized adapter flange available on request.
- Application** To accommodate multiple pallets. For direct assembly on machine tables.
- To fit** Mounting hole pattern for grid 50mm/M12 and for machine tables with T-slot distances of 63 and 100mm.

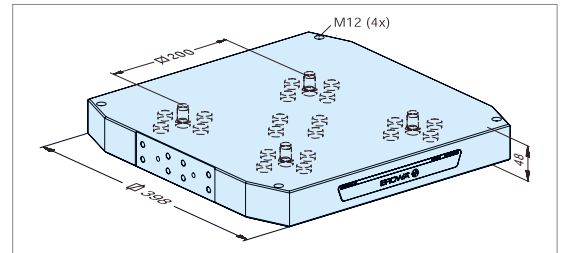


## EROWA MTS 3.0

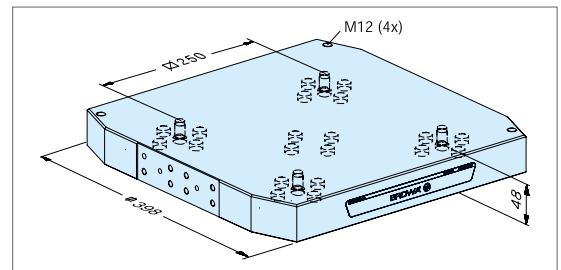
## Pallets

**ER-143875 MTS 3.0 pallet 398 x 398 / 200  
Z-support hard**

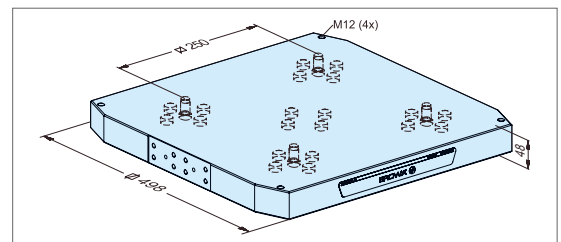
- Version Aluminum pallet, 4-fold, pitch 200mm. With hard Z supports. Excluding MTS 3.0 chucking spigots.
- Application To clamp workpieces, vises and gauges. Holes to be drilled as required.
- Accessories MTS 3.0 chucking spigot set ER-143753 and MTS Gripper-Link ER-038622.

**ER-143876 MTS 3.0 pallet 398 x 398 / 250  
Z-support hard**

- Version Aluminum pallet, 4-fold, pitch 250mm. With hard Z supports. Excluding MTS 3.0 chucking spigots.
- Application To clamp workpieces, vises and gauges. Holes to be drilled as required.
- Accessories MTS 3.0 chucking spigot set ER-143753 and MTS Gripper-Link ER-038622.

**ER-145087 MTS 3.0 pallet 498 x 498 / 250  
Z-support hard**

- Version Aluminum pallet, 4-fold, pitch 250mm. With hard Z supports. Excluding MTS 3.0 chucking spigots.
- Application To clamp workpieces, vises and gauges. Holes to be drilled as required.
- Accessories MTS 3.0 chucking spigot set ER-143753 and MTS Gripper-Link ER-038622.



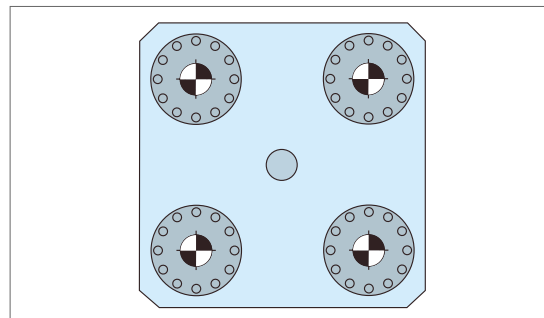
# EROWA MTS 3.0

## Chuckling Spigot-Set

### ER-143752 MTS 3.0 chucking spigot set 4 / A-Z-FD with female thread M12



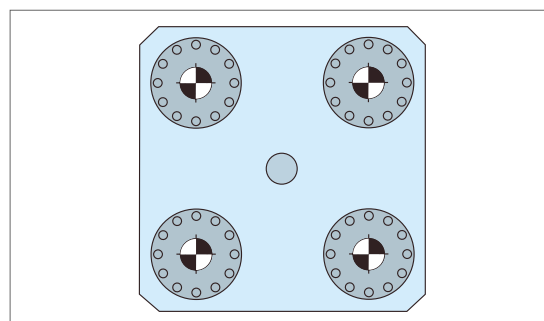
- Version 4 MTS 3.0 centering spigots FD / A, including washers, without M12 attachment bolts.
- Application Predominantly for 5-axis and rotative machining processes (e.g. milling/turning).
- To fit Through pallet (from above) - attachment from below not possible.
- Please note The centering spigots can only be used in connection with MTS 3.0 pallets. If you have any questions, please contact EROWA.



### ER-143753 MTS 3.0 chucking spigot set 4 / A-Z-FD with threaded bolt M12

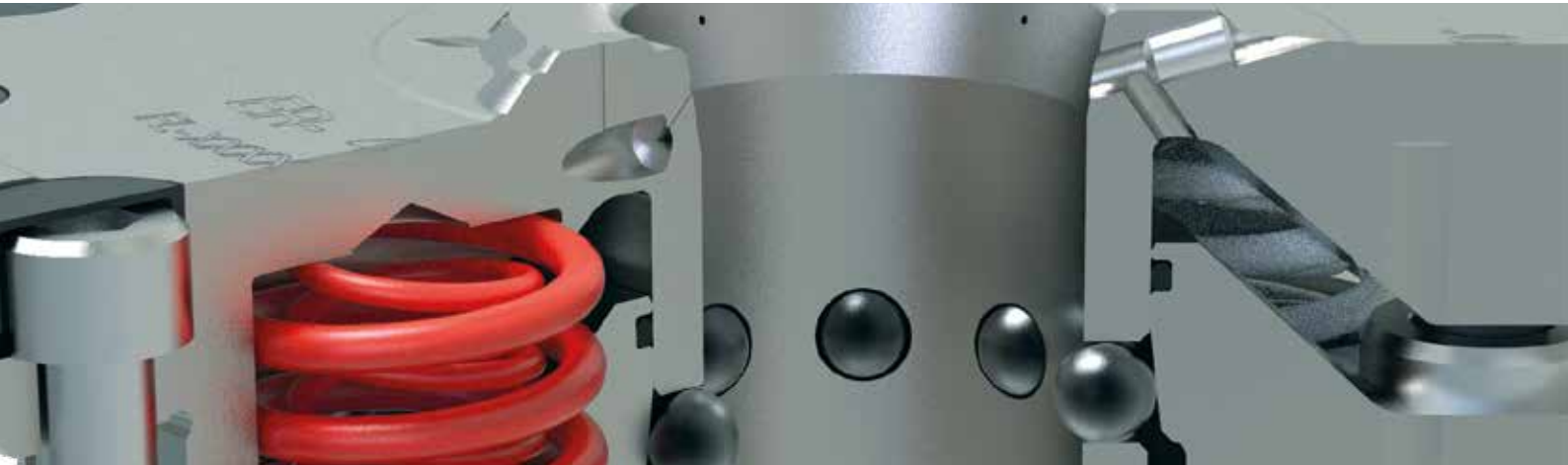



- Version 4 MTS 3.0 centering spigots FD / A, with threaded pin.
- Application Predominantly for 5-axis and rotative machining processes (e.g. milling/turning).
- To fit To the underside of the pallet - attachment from above not possible.
- Note The centering spigots can only be used in connection with MTS 3.0 pallets. If you have any questions, please contact EROWA.



EROWA MTS 3.0

# The most secure zero point clamping system



 Accreditation SCE/Sp 0046 Notified Body 1247 Accredited Certification Authority in accordance with ISO/IEC 17000:2012		<b>Certifying Body</b> SIBE Schweiz 	
<b>Type-examination certificate</b> <small>Translation of original type-examination certificate in German</small>		<b>No. 1484</b>	
Machine	Chuck		
Brand	Erowa		
Type	MTS 3.0 series consisting of: EROWA MTS 3.0 base plate (ER-XXXXXX), Chuck (ER-142087), EROWA MTS 3.0 Centering spigot (ER-142609 or ER-148395)		
Safety specifications	The chucks of the MTS 3.0 series are used to hold the centering spigots securely. The chucks feature a safe combined locking control and centering spigots presence check.		
Manufacturer's address	EROWA AG Knutwilerstrasse 3 6233 Büren Schweiz		
Address of authorised representative	-		
Valid until	4 July 2026		
<small>The examined type complies with the relevant provisions of the Directive 2006/42/EC of 17 May 2006 on machinery. The validity of this certificate is based as well on all attachments named herein and the legal provisions outlined on the reverse side.</small>			
Date of issue	5 July 2021		
 Urs Kaufmann Safety Engineer	 Renzo Walker Head of Certification Body		

## In a nutshell

- MTS 3.0 combines the advantages of the existing MTS-IntegralChucks with the strictest safety standards according to ISO13849, Pld-Cat. 3.
- The integration with the OEM guarantees maximum safety.
- The clamping force of 80 kN ensures exceptional performance on your machining center.
- MTS 3.0 pallets and clamping spigots are compatible with the existing MTS family.
- On the pulse of time with EROWA MTS 3.0 - Trust in patented and certified technology!

### Switzerland

EROWA AG  
Knutwilerstrasse 3  
CH-6233 Büren  
Switzerland  
Tel. 041 935 11 11  
Fax 041 935 12 13  
info@erowa.com  
[www.erowa.com](http://www.erowa.com)